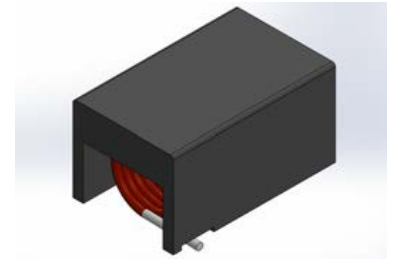


# SMD Flat Top Air Core Inductors

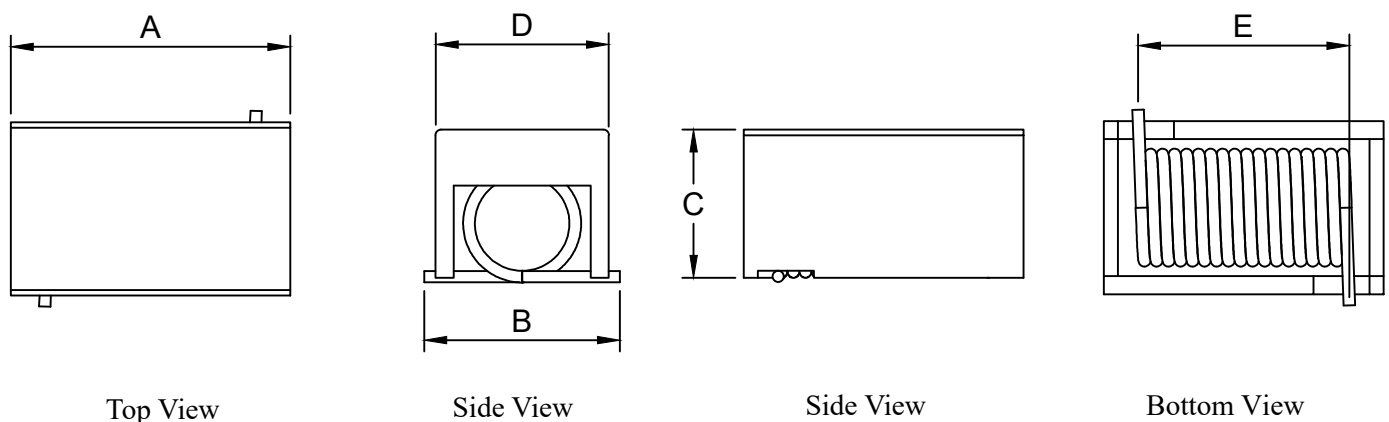


## Air Core Coil Features

- Air core inductors feature high Q and current handling
- Acrylic top provides a flat surface for pick and place
- Solder coated leads ensure reliable soldering
- Operating temperature range:  $-40^{\circ}\text{C}$  to  $+125^{\circ}\text{C}$
- Storage temperature range:  $-55^{\circ}\text{C}$  to  $+145^{\circ}\text{C}$



## Air Core Coil Inductor Dimensions & Configurations (Unit In mm)



P/N Type	A	B	C	D	E
SMTAM4024	10.5(max)	7.0(max)	6.0(max)	6.1±0.2	8.0±0.6

## Specification

Eastever P/N	(A)Max	(nH)	Q(min)	Test Freq (MHz)	DCR (mΩ)Max	SRF(GHz)	Coilcraft P/N	Würth P/N
SMTAM4024 - 90NG	3.5	90	100	50	15	>1.0	132-09SM	744918190
SMTAM4024 - 111NG	3.5	111	100	50	15	>1.0	132-10SM	744918211
SMTAM4024 - 130NG	3.0	130	100	50	20	>0.9	132-11SM	744918213
SMTAM4024 - 169NG	3.0	169	100	50	25	>0.8	132-12SM	744918217
SMTAM4024 - 206NG	3.0	206	100	50	30	>0.7	132-13SM	744918220
SMTAM4024 - 222NG	3.0	222	100	50	35	>0.6	132-14SM	744918222
SMTAM4024 - 246NG	3.0	246	100	50	35	>0.6	132-15SM	744918224
SMTAM4024 - 307NG	3.0	307	100	50	35	>0.5	132-16SM	744918230
SMTAM4024 - 380NG	2.5	380	100	50	50	>0.5	132-17SM	744918238
SMTAM4024 - 422NG	2.5	422	100	50	60	>0.4	132-18SM	744918242
SMTAM4024 - 491NG	2.0	491	100	50	65	>0.4	132-19SM	744918249
SMTAM4024 - 538NG	2.0	538	100	50	90	>0.4	132-20SM	744918254